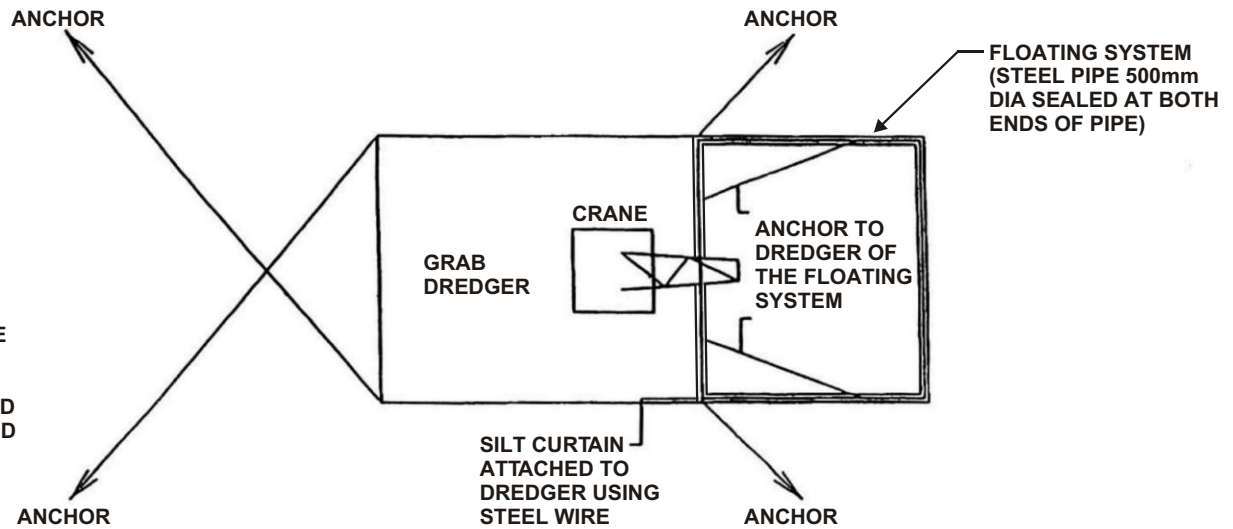
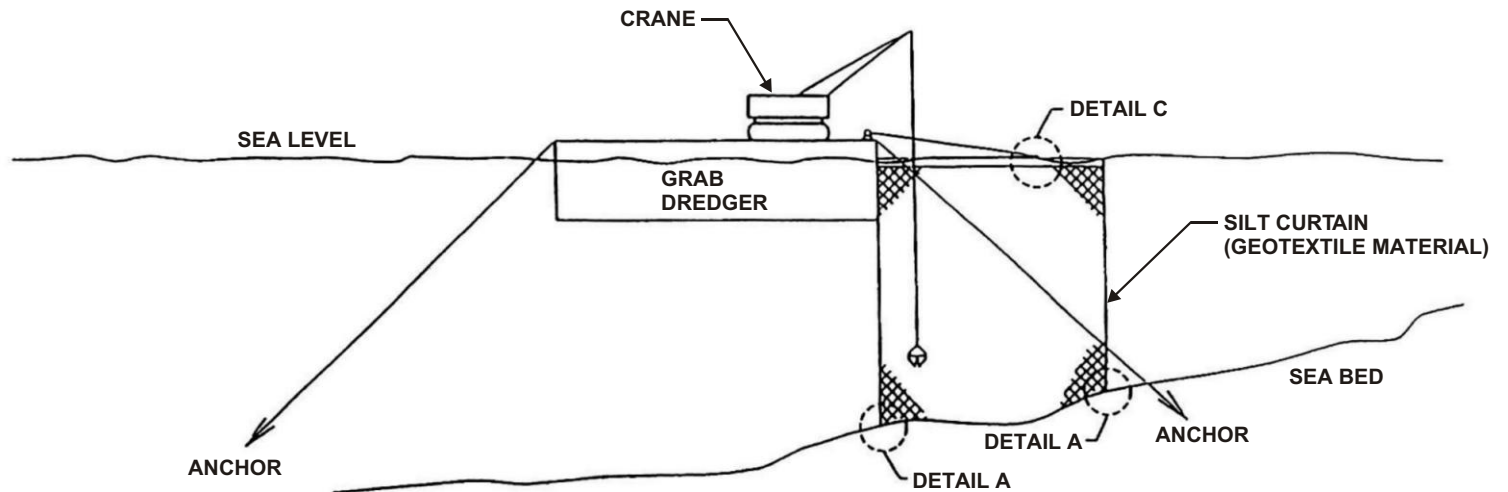


**NOTES:**

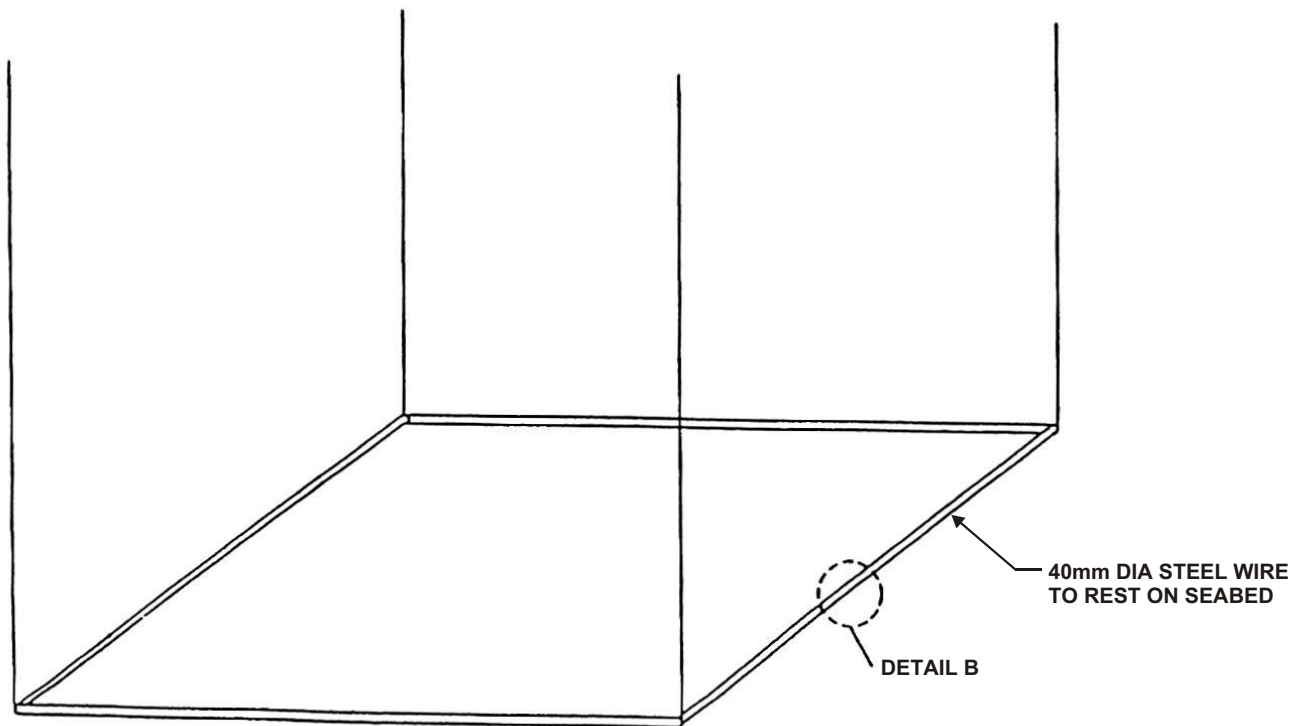
1. THE 500MM STEEL FRAME SHALL BE FIXED TO THE GRAB DREDGER BY MEANS OF WIRE.
2. SUFFICIENT SLACK OF SILT CURTAIN SHALL BE ALLOWED TO COPE WITH THE WAVE AND TIDAL ACTION TO ENSURE THE CURTAIN IS RESTED ON SEABED.
3. THE SILT CURTAIN SHALL BE A SINGLE PIECE OF GEOTEXTILE WITHOUT ANY UNNECESSARY LAPPING.
4. THE WHOLE FRAME SHALL BE LIFTED UP BY THE CRANE WHEN MOVING ABOUT.
5. THE SILT CURTAIN SHALL BE REGULARLY LIFTED UP AND INSPECTED FOR ANY PHYSICAL DAMAGE AND REPLACED WHERE NECESSARY.
6. THE ARRANGEMENT OF THIS FIGURE IS INDICATIVE ONLY.



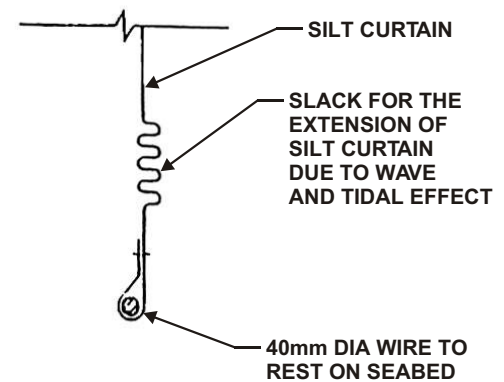
**PLAN**



**SIDE VIEW**



**DETAIL A**



**DETAIL B**

